

Produit

**IndUScan**

Dossier

Date

**28/08/15**

Page

**1 / 2**

## IndUScan



The IndUScan is an industrial system of ultrasonic control and acquisition

### Advantages

- Combines ultrasonic, piloting, and interfacing electronics in the same compact box
- Modular conception of the box. It is adapted to a one-way configuration (card USPC7100LA) or multi-way configuration (ensemble PCMUX7108HA+ : USPC7100MHA+ et MUX8H)
- Progressive and programmable system. The IndUScan has an IT and a Micro Automaton material platform that can be programmed to adapt to specific needs
- Excellent acoustics performances
- Can acquire datas in real time AScan CScan (At recurrence frequency)

### Applications

- Railways : Control of the rail

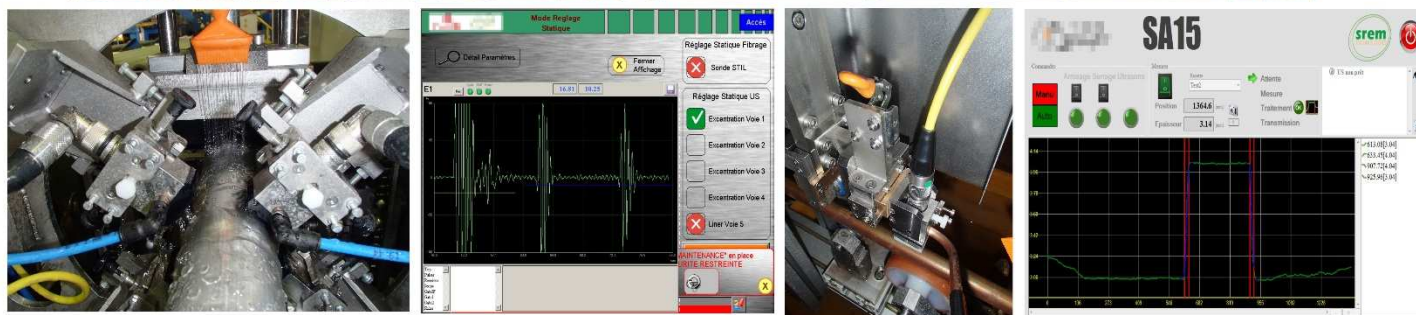


**SREM Technologie se réserve le droit de toutes modifications.**

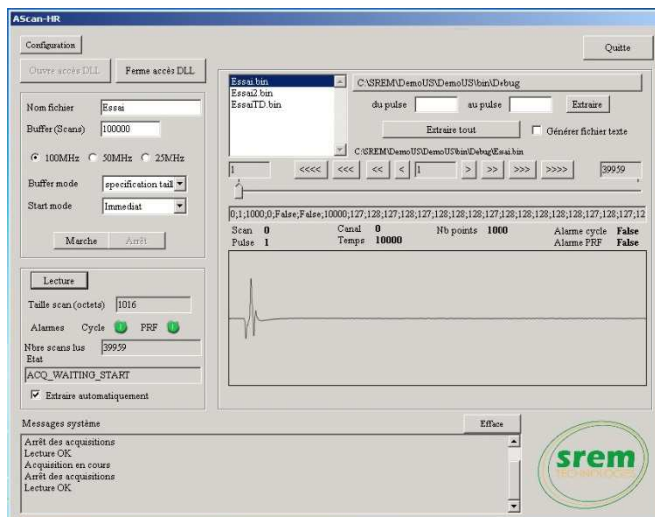
SREM Technologies – SAS au capital de 1 080 000 € - RCS Le Mans B 394 727226 – SIRET 00026 – TVA FR64394727226  
ZI Ouest – rue des frères Chappe – 72200 LA FLECHE – T. 02.43.48.15.10 – Fax 02.43.45.25.26

Produit **IndUScan** Dossier  Date **28/08/15** Page **2 / 2**

- Automotive : Control of welds
- Metalworking : Thickness and out-of-round measurement



- R&D, Labo : Analysis and signal treatment



**SREM Technologie se réserve le droit de toutes modifications.**